

Limitations When Using KSG3410 Remote Control

First Edition June 20, 2002

Copyright (c) 2002 KIKUSUI Electronics Corp

QPB3420 is an application designed for the KSG3421/KSG3420. It can also be used to remotely control the KSG3410, with the following limitations. Please accept the limitations when using the software.

■ **Functional Limitations When Using Remote Control**

1. Only RS232C is supported for the connection between QPB3420 and the KSG3410.
2. Functions specific to the KSG3410 are not supported.
 1. Other Groups 10A
 2. Tone function of the built-in FM stereo signal generator
3. Phase of RDS Modulation cannot be received.
4. Since the KSG3410 does not have Program Type Name, it is not supported.

Limitations When Using KSG3410 Remote Control

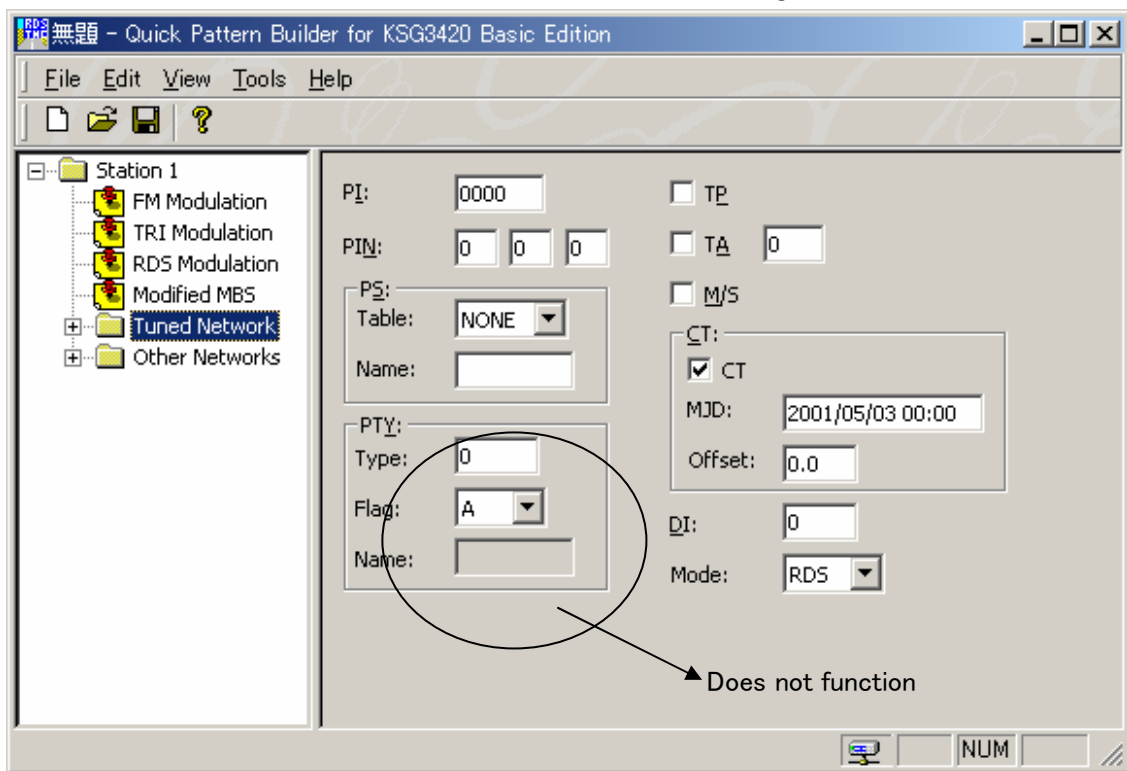


Fig. 1

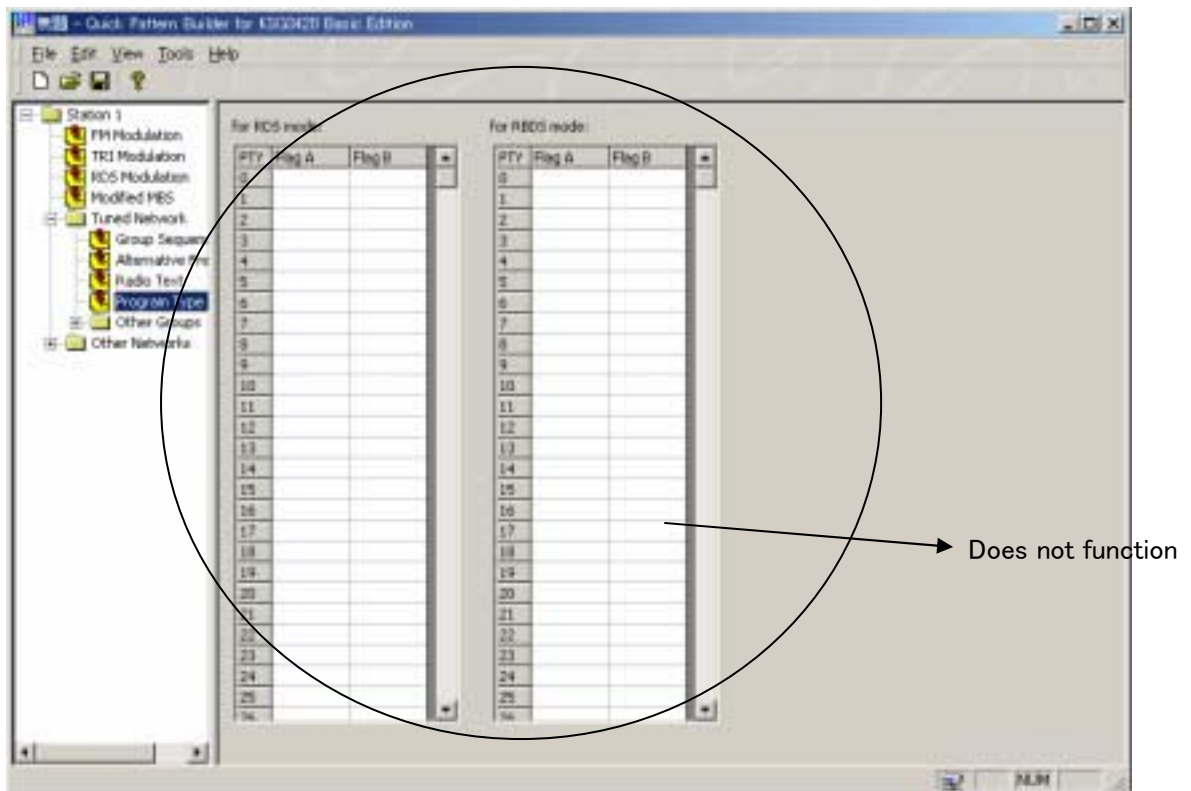


Fig. 2

5. Reception of Other Groups from the KSG3410 is not supported.
6. Data Source, Data Polarity, and Clock Polarity are not supported.

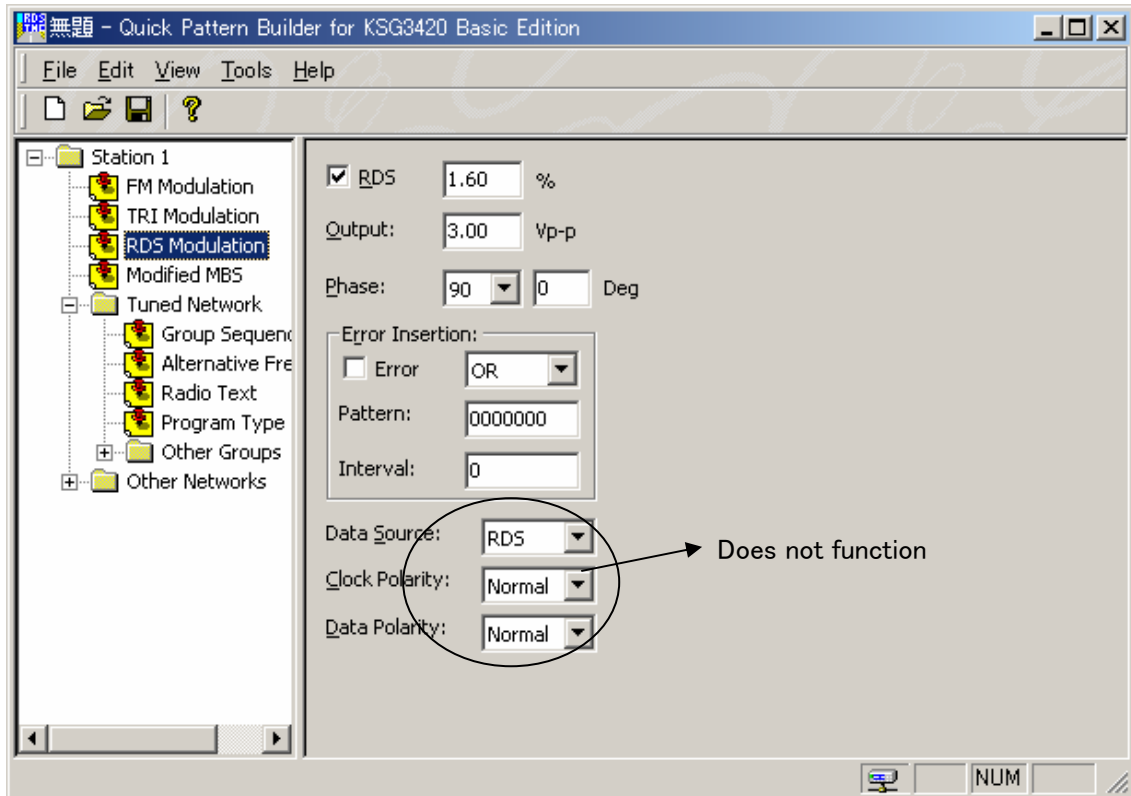


Fig. 3

7. Since the KSG3410 does not have Interval of Radio Text, it is not supported.

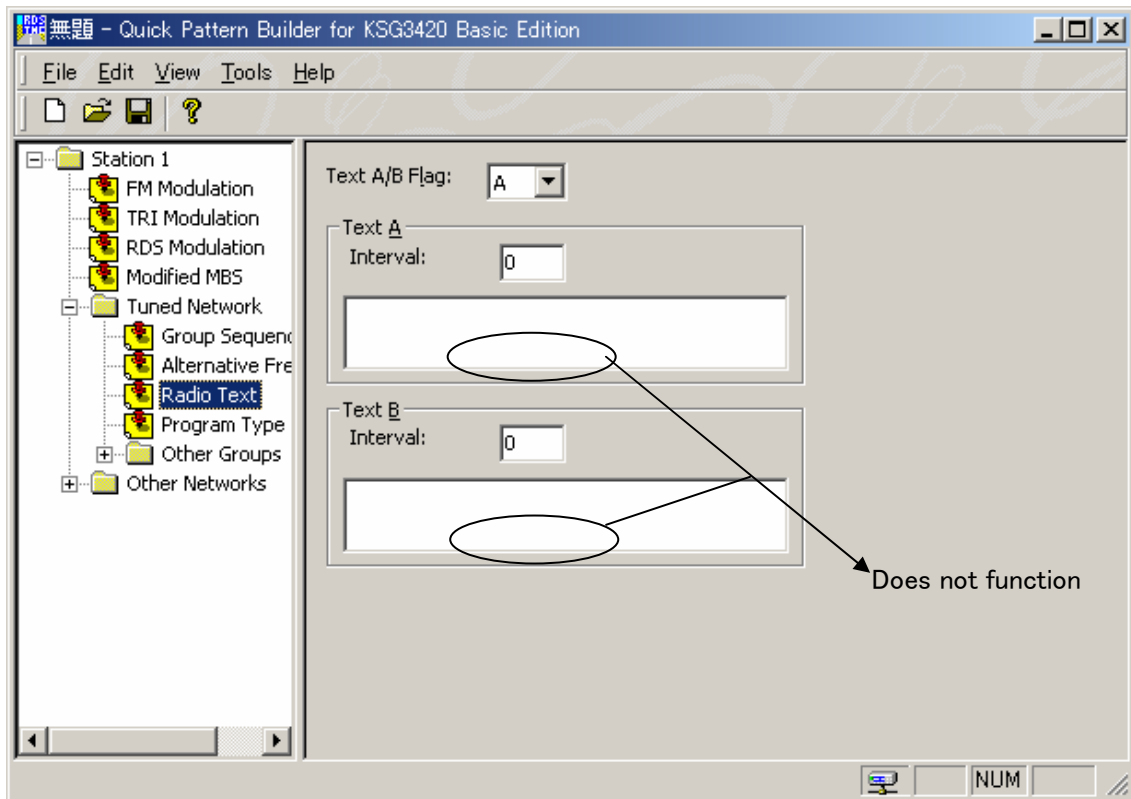


Fig. 4

8. Only Memory Number, Store, Recall, and Release functions on the Memory Manage dialog box are supported.

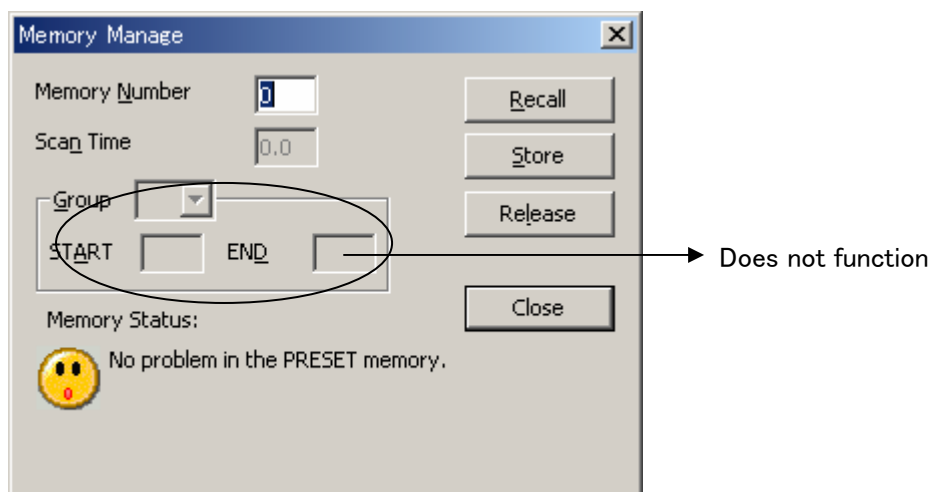


Fig. 5

■ **Phenomena That Occur on the KSG3410 during Remote Control**

1. The first character of Radio Text of the KSG3410 is not displayed.
2. If you change the SK level when SK is OFF, the LED illuminates for a short instance. During that instance, the SK signal is output.